

# Maxi-Tuff® MF Elevator Bucket

Slow Speed Continuous Discharge 1-250 FPM



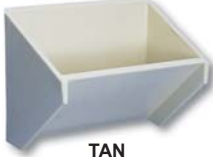


The Maxi-Tuff MF Medium Front continuous elevator bucket has the traditional shape of an MF steel elevator bucket. It also has a heavy reinforced lip and corners with a thickened back wall for mounting strength. Standard vertical spacing is depth + 1/4". The most common applications include fertilizer, clay, alumina and pellets. The Maxi-Tuff MF is the best bucket for fluffy or free flowing materials or those which require gentle handling.

### Features

- Reduces weight on elevator up to 80%
- Cleaner discharge than steel buckets
- Non-corrosive, non-sparking
- Thicker walls
- Heat, impact and abrasion resistant

### Benefits

- Lowers elevator maintenance
- Reduces energy usage
- Extends bucket life
- Decreases elevator down-time
- Easy to install and replace
- Reduces build-up in bottom of buckets
- Saves money versus carbon steel

MATERIALS	NYLON	URETHANE	HD POLYETHYLENE	SPECIAL RESINS
<b>COLOR</b>	 TAN	 GREEN	 WHITE	As Available
<b>APPLICATION</b>	Hot, high impact, abrasive, dense products	Heavy abrasion, sticky materials	Food Products	Product conditions not suitable for "In Stock" bucket materials
<b>TEMPERATURE RANGE</b>	-60° F to + 300° F (350° F Intermittent)	-60° F to + 180° F (210° F Intermittent)	-120° F to + 180° F (210° F Intermittent)	As Required
<b>FDA APPROVED MATERIAL</b>	Available upon request	Yes	Yes	As Required
<b>COMMENTS</b>	Best for high heat applications, with tough impact and abrasion needs.	Most flexible and abrasion resistant. Resists product sticking and sharp cutting particles.	Economical, high density polyethylene. FDA approved material for handling food grade products.	For specific requirements, such as extreme temperature, abrasion, special color or product discharge.

## Recommended Industrial Applications for the Maxi-Tuff® MF

Recommended but not restricted to handling these specific products	• Aggregates	• Chemicals	• Fly Ash	• Minerals	• Sawdust
	• Alumina	• Clays	• Fullers Earth	• Ores	• Silica Sand
	• Asphalt	• Coal	• Gypsum	• Pellets	• Steel Shot
	• Bauxite	• Cullet	• Lime	• Phosphates	• Sugar
	• Cement	• Fertilizer	• Limestone	• Salt	• Wood Chips

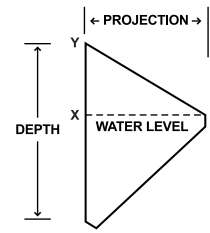
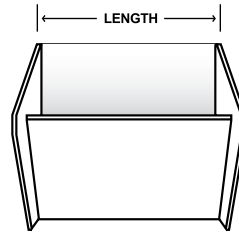
Call: 1-800-527-0657 or Visit Us Online at: [www.maxilift.com](http://www.maxilift.com)

16400 Midway Rd Dallas, TX 75001 • Ph: (972)735-8855 Fx: (972)735-8896 • [info@maxilift.com](mailto:info@maxilift.com)

# Maxi-Tuff® MF Elevator Bucket

In Stock For Immediate Delivery!

#1 Selling Industrial Elevator Bucket in North America!



MOUNTING HOLES AND VENTING TO YOUR SPECIFICATIONS

## Maxi-Tuff® Medium Front Continuous Discharge Elevator Bucket

BUCKET SIZE, INCHES**				WEIGHT, LBS.			CAPACITY				
BUCKET SIZE	Length	Proj.	Depth	(Poly) H.D.P.E.	Nylon	Urethane	Water Level Cu. Inches X-X	100% Gross Capacity Cu. Inches X-Y	Capacity Cu. Feet X-X	Standard Spacing	Carton Qty
8 x 5 x 7	8-1/4	5-1/2	7-1/2	1.70	1.97	2.37	80.56	122.06	0.047	8	16
10 x 5 x 7	10-1/4	5-1/2	7-1/2	2.04	2.32	2.86	94.90	144.64	0.055	8	16
12 x 7 x 11	12-1/4	7-1/2	11-1/2	3.62	4.00	4.80	172.63	370.88	0.100	12	6
14 x 7 x 11	14-1/4	7-1/2	11-1/2	3.88	4.53	5.33	201.3	436.15	0.117	12	6
16 x 7 x 11	16-1/4	7-1/2	11-1/2	4.39	4.97	5.97	238.81	503.55	0.138	12	6
18 x 7 x 11	18-1/4	7-1/2	11-1/2	4.95	5.83	6.74	244.31	530.40	0.141	12	6
12 x 8 x 11	12-1/4	8-1/2	11-1/2	4.32	4.81	5.65	274.60	462.53	0.159	12	6
14 x 8 x 11	14-1/4	8-1/2	11-1/2	4.57	5.26	6.28	335.61	554.67	0.194	12	6
16 x 8 x 11	16-1/4	8-1/2	11-1/2	5.17	5.81	7.03	396.63	646.81	0.230	12	6
18 x 8 x 11	18-1/4	8-1/2	11-1/2	5.83	6.77	7.94	467.65	738.95	0.271	12	6

\*\* Can be modified to lesser projections. Actual dimensions may vary slightly on all elevator buckets, depending on specified raw material.

### Other Considerations

**ENGINEERING:** Please see Section 4 of catalog for detailed engineering, speed and capacity information.

**DRILLING:** Elevator Buckets are manufactured without a drill pattern. Special drilling or punching can be accommodated upon customer request. \*Mounting Holes drilled 1/32 to 1/16 over bolt diameter for easier application.

**VENTING:** Available as needed. Call for recommendations..

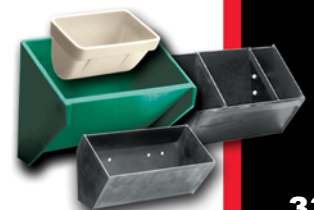
**DIGGER BUCKETS:** Use slightly larger metal digger buckets to help loosen material in the elevator boot section that has set up or hardened, thereby reducing abrasion on the plastic buckets. Call for details on Metal Digger elevator bucket options.

**SPACING:** Depth + 1/4" = most practical vertical spacing (depending on materials and speeds, smaller and larger spacing may be used).

**INSTALLATION:** Use a #1 standard elevator bolt or Sabre-Tooth elevator bolt for installation. Designed to be used with fender or flat washers and hex or locking nuts. If buckets are being installed on a chain, use hex head bolts, nuts and washers. A locking device should always be used.

**ADAPTER PLATES:** Recommended for chain mounting applications.

**FDA:** Both the urethane and polyethylene are designed to FDA specifications for direct contact with food products. Special food grade nylon is also available for high heat applications.



Call: 1-800-527-0657 or Visit Us Online at: [www.maxilift.com](http://www.maxilift.com)

16400 Midway Rd Dallas, TX 75001 • Ph: (972)735-8855 Fx: (972)735-8896 • [info@maxilift.com](mailto:info@maxilift.com)

INDUSTRIAL BUCKETS: MAXI-TUFF® MF